

Assets Loss Prevention Software

CaIN helps to keep the Assets where they were assigned

School Districts have to manage thousands of valuable Technology Assets, which are spread across different campuses in different rooms. These Assets cost Millions of Dollars to acquire. It is therefore always important for District Technology Leadership to make sure that each Asset is where it is supposed to be.

Saving the information of an Asset once purchased, putting an identity bar code tag on the Asset, sending over the Asset to its particular location/room at any campus and saving this information is straightforward. Any Asset Inventory System can handle this. Some ISDs are able to keep these inventory records on even Spreadsheets. However, once the Asset is sent to the campuses, knowing if the Asset is still at the place where it belongs to, or if the Asset Tags are still on the same Asset they were allocated to, or if the Asset condition is still Perfect or if there has been some wear and tear, or if the Asset has somehow moved without proper notification, or if the data we have on records depicts a real true picture, is always a big challenge irrespective of the size of School District.

Asset Inventory Systems available in the market and being used by most Schools do not offer any substantial solution to all these troubling challenges for Technology Administrators. Spreadsheets are also used at some Districts, but despite of being simple, they do not resolve these problems either. Administrators have no choice but to live with these challenges despite using expensive Asset Inventory Management Systems or maintaining Spreadsheets. Assets inventorying, their validation & verification, and confirmation continues to remain a daunting task, unless CaIN is integrated to any of these Inventory Management Software or to the Spreadsheet based inventory records keeping.

CaIN is a unique Campus Asset Inventory Collection Software specifically designed the way School Districts would want to take stock & monitor their assets lying around at different campuses in different locations and classrooms. It takes care of all the above-defined challenges to Technology Administrators in addition to simplifying the Inventory Collection & Confirmation processes. The workflows developed for this mobile & web software come very natural to Campus Technology Assistants (CTAs) while inventorying the assets. Collecting Inventory reliably and updating records correctly can easily be illustrated in 3 simple steps:

STEP 1 Scan Assets at Campus.
Real time data validation and reporting for any mismatch on your iPod, iPad or iPhone.
Know exactly right at the Campus if the Inventory collected is correct and complete.

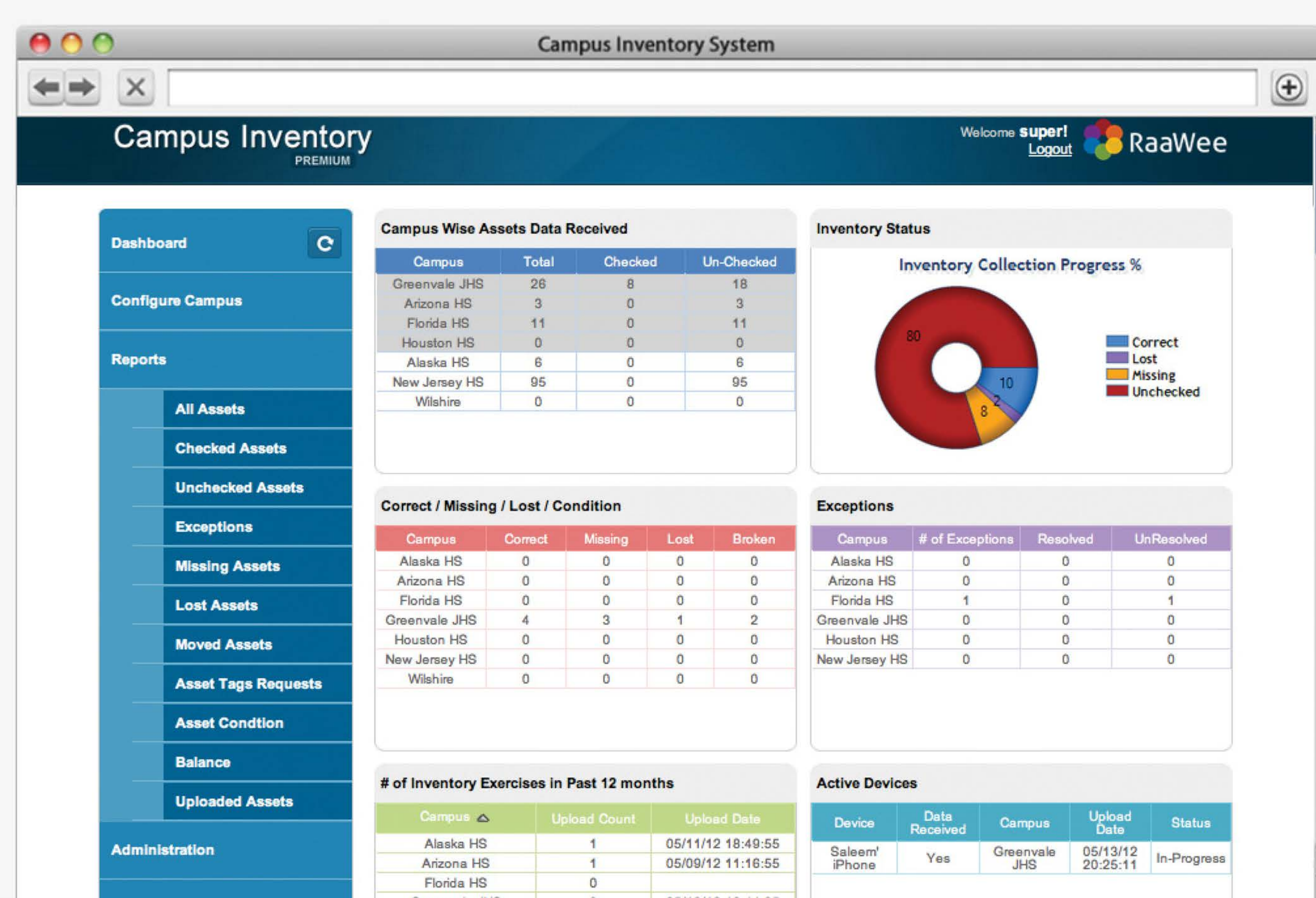
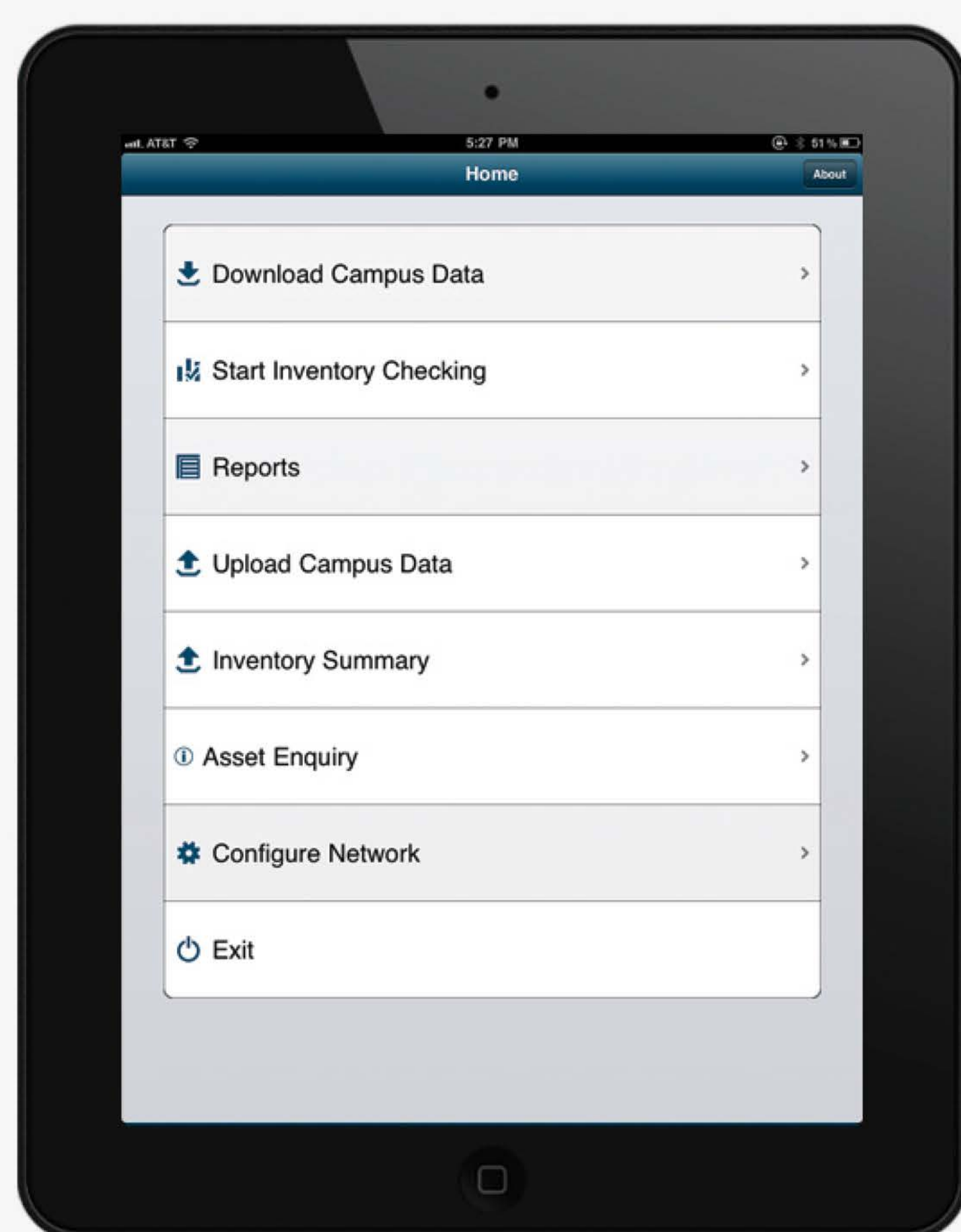


STEP 2 Upload Data wirelessly
Over-The-Air on the server without the need to go back to the District Office!



STEP 3 At District office: Verify the Data using the Web based Reports and Dashboard.
Address any issues without leaving your desk. Update Accurate and most Current Data to the backend Inventory System!

Campus Technicians can either scan the Asset into an iPod Touch, iPhone or iPad using a compatible Bluetooth Bar code scanner or just input the Asset Tag number while collecting the inventory. CaIN utilizes customized scripts to seamlessly integrate with the 3rd party backend inventory system that manages purchase of assets. Over-The-Air data sync and query capability ensures accuracy, simplicity and speed.



CalN has three different versions to choose from

Web Module – Features	Basic	Advance	Premium
Configure Campus Basic	✓		
Configure Campus Advance		✓	✓
Configure Campus Checklist			✓
Transfer Assets for Assets marked as Exceptions		✓	✓
Mark Assets as Missing		✓	✓
Mark Missed Assets to Lost Assets			✓
Define Users & Roles	✓	✓	✓
Fetch Campuses Data from Backend	✓	✓	✓
Manage Devices		✓	✓
Upload Assets to back-end Inventory	✓	✓	
Upload Assets to back-end Inventory System with Graph and Checklist			✓
Checked Assets Report	✓	✓	✓
All Assets Report with Graphical representation on Status		✓	✓
All Assets Report - Advance Search Option & Export the result to Excel		✓	✓
Printer Friendly Reports Option	✓	✓	✓
Color legends in Reports for quick viewing and understanding		✓	✓
Asset Condition Reports (Broken, Working, Perfect)			✓
Asset Moved Report (Inter-Campus Movement)			✓
Lost Assets Report			✓
Missing Assets Report			✓
Asset Tag Requests			✓
In-Correct Assets Report	✓	✓	
Export Every Report to Excel with Date & Time Stamp		✓	✓
Dashboard to monitor on one screen: <ul style="list-style-type: none">How much Campus Wise Assets Data is ReceivedConsolidated Inventory Collection ProgressReported Missing / Lost / Condition for AssetsExceptions Handling Status# of Inventory Exercises in Past 12 monthsActive Devices out for Inventory and their status			✓
Room wise Balance of each Asset Type Report	✓	✓	✓
Reports - Room wise Sorted Option by default		✓	✓
Device Module (iPod Touch, iPhone, iPad) – Features	Basic	Advance	Premium
Download Campus Data	✓	✓	✓
Collect Inventory using Bar Code Scanner or Simply keying in the Asset Tag	✓	✓	✓
Real time Data Validation	✓	✓	✓
Mark Asset as Correct	✓	✓	✓
Add Comments to each Asset scanned	✓	✓	✓
Mark Asset as In-Correct in case the Tag was found on the wrong Asset	✓	✓	
Resolve Incorrect Asset Tag Situation			✓
Generate Print Asset Tag Request			✓
Edit Asset Information such as Description, Model, Usage	✓	✓	✓
Add Comments to Assets being Scanned	✓	✓	✓
Mark Asset Condition as Broken or Working if Asset is not Perfect any more			✓
Mark Asset as an Exception in case Asset is found in a different Campus	✓	✓	✓
Warranty Expiry Notification for Assets while scanning		✓	✓
Asset Enquiry with Asset Tag with the option to Email the info.		✓	✓
Asset Enquiry with Asset Serial Number with the option to Email the info.			✓
Inventory Summary for Data already uploaded and to be uploaded		✓	✓
Inventory Status Report	✓	✓	✓
Asset Movement Report			✓
Email Reports from Device		✓	✓
Mark Asset as Missing			✓